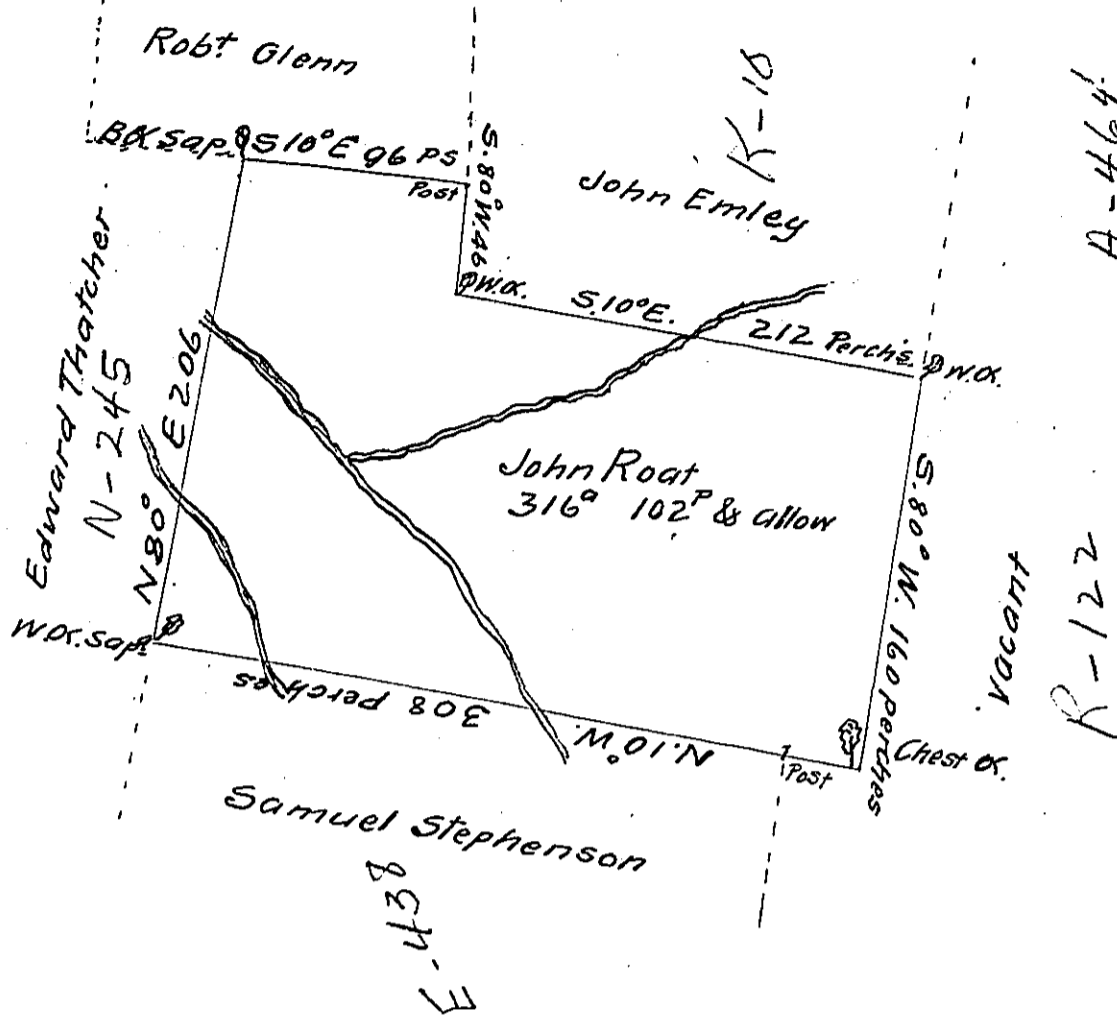


Sug. Loaf -
Luzerne.



A Draught of a tract of Land called _____ situate on the waters of Nescopeck adjoining land surveyed to Edward Thatcher, Sam^l Stephenson, & others in the County of Northumberland containing Three hundred & sixteen acres & one hundred & two perches besides the usual allowance of 6 p cent for Roads & c^o. Surveyed the 12th day of November 1773 for John Root in pr^{se} of an order dated the third day of August 1769. Numbered 3705.

To _____ by Chas^s Stewart D^y Sur^r.

John Lukens Esq^r
Survey^r Gen^l

IN TESTIMONY that the above is a copy of the original remaining on file in the Department of Internal Affairs of Pennsylvania, made conformably to an Act of Assembly approved the 16th day of February, 1833, I have hereunto set my Hand and caused the Seal of said Department to be affixed at Harrisburg, this Thirtieth day of August 1911

Henry Howell
Secretary of Internal Affairs.